

design schedule

THEME: "COMMUNITY AFFAIR"

1. "Come to the Fair" - designer's choice
2. "A-Tisket-A-Tasket" - use a basket, may include some fruits and/or vegetables
3. "Go Green" - all green
4. "Dunking Booth" - water showing
5. "The Fair Parade"
 - a. Not over 3"
 - b. Not over 5"
 - c. Not over 8"
6. "Horse Show" - use some road side material
7. "Stage Shows" - design showing motion
8. "Art Show" - colorful
9. "Take a Chance" - include some gold flowers
10. "Harvest Time" - All dried

PREMIUMS: 1ST \$5.00, 2ND \$4.00, 3RD \$3.00



garden club invitational

THEME: "COMMUNITY AFFAIR"

Pedestal - "Ferris Wheel" - a tall creative design. Pedestal is approximately 16" to 18" in diameter and is 42" high.

Centerpiece - "Celebrate Kiwanis" - a traditional design staged on an 18" Formica round furnished by committee.

Low Table - "Picnic on the Grounds" - one place setting, no flatware. Staging is approximately 28" wide, 32" deep and 19" high.

JUNIOR DIVISION
Saturday Entry: 8:30 AM to 10:30 AM
Judging: 11:00 AM

junior horticulture

Ages eligible up to 17 years

1. Annual, 1 cut stem - planted and grown by exhibitor
2. Perennial, 1 cut stem - planted and grown by exhibitor
3. Collection of annuals - 3 to 5 stems
4. Small plant in 4" pot - grown by exhibitor
5. Small plant started from seed - in pot not over 4" in diameter

junior design

THEME: "COMMUNITY AFFAIR"

Ages 8 and under

1. "Clowns on Parade" - colorful design

Ages 9 - 12 years

2. "Fire Trucks" - use some red

Ages 13 - 17 years

3. "Parade Floats" - designer's choice

junior premiums:

1ST \$3.00, 2ND \$2.00, 3RD \$1.00

CHAIRMAN
LAUREEN NIEHAUS-BECKNER
CHEVIOT-WESTWOOD KIWANIS CLUB

CO-CHAIRMAN
JANET WEBER
WESTERN HILLS GARDEN CLUB

DESIGN CHAIRMAN
JANE AVERY
CINCINNATI HILLS GARDEN CLUB

HORTICULTURE CHAIRMAN
NANCY FENTON
WESTERN HILLS GARDEN CLUB

REGISTRATION CHAIRMAN
ELAINE CHEESEBREW
MACK GARDENERS



OUT DOOR DISPLAY

HOLSCHER HACKMAN
GARDEN CENTER
6088 HARRISON AVENUE
513-598-6078

Schedule available online:
www.HarvestHomeFair.com

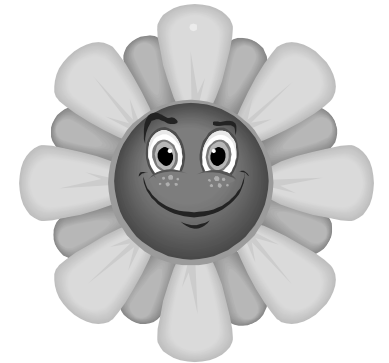
STANDARD FLOWER SHOW SCHEDULE

Harvest Home Park
Cheviot, Ohio

Sept. 9, 10, 11, 2011

Harvest Home Fair

A COMMUNITY AFFAIR



Cheviot-Westwood Kiwanis

RULES AND REGULATIONS

1. This is a standard Flower Show judged by National Council standards and planned by members of Cincinnati District of G.C.O., Inc.
2. All horticulture must have been grown by exhibitor. Material used in designs need not be grown by exhibitor. Designs should not measure over 24" wide and horticulture's maximum length is 20".
3. Entry tags must be completely filled out.
4. Specimens shall be exhibited in clear glass bottles with no printing, furnished by exhibitor and large enough to support the material. No foliage should be below the water line.
5. A collection is 1 stem each of 5 different specimens each correctly named in 5 separate containers with 1 entry tag.
6. Do not oil or treat foliage specimens. No painted or dyed live material is permitted.
7. The Fair Committee will not be responsible for loss or damage to containers.
8. Exhibitor may make more than one entry per horticulture class if each is a different species, variety, cultivar, type or color.
9. Cut specimens must have been in the possession of exhibitor at least 90 days and house plants 3 months.
10. All exhibits for the Flower Show (except Junior Class) must be placed from 8 AM to 10:45 AM Friday. Judging will begin at 12:30 PM.

Exhibits may be removed

Sunday 9:00 pm - 9:30 pm or

Monday 8:00 am - 10:30 am with claim check.

NO EXHIBITS MAY BE REMOVED BEFORE ABOVE STATED TIMES.

HORTICULTURE SCHEDULE

1. ROSE, Hybrid Tea—1 bloom, disbudded
 - a. White or near white
 - b. Yellow - Yellow blend
 - c. Orange - Orange blend
 - d. Pink - Pink blend
 - e. Red - Red blend
 - f. Any other color or blend
 - g. Single flowering - do not disbud
 - h. Collection (see rule #5)
2. ROSE, Grandiflora
 - a. 1 bloom, disbudded
 - b. 1 spray
3. ROSE, Floribunda or Polyantha, 1 spray
4. ROSE, Climber
5. ROSE, Miniature
 - a. 1 bloom, disbudded
 - b. 1 spray
6. ROSE, other types
 - a. Shrub
 - b. Old garden
 - c. Any other
7. ANNUAL ASTER—1 bloom, disbudded
 - a. White
 - b. Pink
 - c. Lavender
 - d. Any other color
8. CELOSIA
 - a. Crested cockscomb
 - b. Plume type cockscomb
 - c. Collection (see rule #5)
9. CHRYSANTHEMUM
 - a. Single stem, disbudded
 - b. Spray
10. COLEUS FOLIAGE
 - a. Predominately red
 - b. Predominately green
 - c. Predominately yellow
 - d. Other
 - e. Collection (see rule #5)
11. DAHLIA—1 bloom, disbudded
 - a. Up to 2" across
 - b. From 2" up to 4"
 - c. From 4" up to 6"
 - d. From 6" up to 8"
 - e. Over 8"
 - f. Collection (see rule #5)
12. HOSTA FOLIAGE
 - a. Small up to 3" across
 - b. Medium from 3" up to 6"
 - c. Large from 6" up to 8"
 - d. Extra large over 8" across
 - e. Collection (see rule #5)
13. MARIGOLD—Tall carnation type, 1 bloom, disbudded
 - a. Yellow
 - b. Orange
 - c. Any other color
 - d. Collection (see rule #5)
14. MARIGOLD—double French type, 1 spray
 - a. Yellow
 - b. Orange
 - c. Blend
 - d. Any other color
15. MARIGOLD—not listed
 - a. Single French type, 1 spray
 - b. Dwarf
 - c. Any other
16. ZINNIA—1 bloom, disbudded, over 3"
 - a. Dahlia flowered
 - b. Cactus flowered
 - c. Other
17. ZINNIA—1 bloom, disbudded, from 2" up to 3"
 - a. Dahlia flowered
 - b. Cactus flowered
 - c. Other
18. ZINNIA—up to 2"
 - a. 1 bloom, disbudded
 - b. 1 spray
19. ANNUAL FLOWER—not listed
 - a. Round form- 1 stem, disbudded
 - b. Spike form
 - c. Spray form
 - d. Annual bulb or tuber
20. ANNUAL COLLECTION—1stem each of 5 different annual flowers (see rule #5)
21. PERENNIAL FLOWER—not listed
 - a. Round form- 1 stem, disbudded
 - b. Spike form
 - c. Spray form
 - d. Perennial bulb or tuber
22. PERENNIAL COLLECTION—1 stem each of 5 different perennial flowers (see rule #5)
23. CUT BRANCH—not over 20"
 - a. Berried
 - b. Flowering
 - c. Small leaf or needled
 - d. Any other
24. VINES—not over 20"
 - a. Clematis
 - b. Ivy
 - c. Any other flowering vine
 - d. Any other berried vine
 - e. Any other foliage vine
25. HERB COLLECTION (see rule #5)
 - a. Culinary collection
 - b. Fragrant collection
 - c. Decorative collection
 - d. Medicinal collection
26. DECORATIVE FOLIAGE—not listed
 - a. Fern
 - b. Caladium
 - c. Ground cover
 - d. Any other foliage not listed
 - e. Collection (see rule #5)
27. HOUSE PLANT—pot size 8" or less
 - a. Flowering
 - b. Grown for foliage
 - c. Cactus or succulent

PREMIUMS: 1ST \$3.00, 2ND \$2.00, 3RD \$1.00